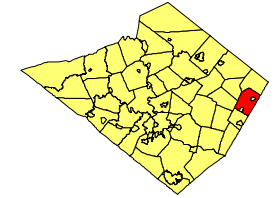


ZONING MAP

WASHINGTON TOWNSHIP

BERKS COUNTY, PENNSYLVANIA



LEGEND

- MUNICIPAL BOUNDARY
 - COUNTY BOUNDARY
 - PARCEL BOUNDARIES
 - ROAD CENTERLINES
 - WATER BODY
 - STREAM CENTERLINES
- ZONING DISTRICTS**
- WSC - WATERSHED CONSERVATION
 - A - AGRICULTURAL
 - R-1 RURAL RESIDENTIAL
 - R-2 SUBURBAN RESIDENTIAL
 - HDV - HIGH DENSITY RESIDENTIAL AND VILLAGE
 - HDV/PRD - HIGH DENSITY RESIDENTIAL AND VILLAGE WITH PLANNED RESIDENTIAL OVERLAY
 - HDV/MHP - HIGH DENSITY RESIDENTIAL AND VILLAGE WITH MOBILE HOME PARK OVERLAY
 - C - COMMERCIAL
 - LI - LIGHT INDUSTRIAL
 - GI - GENERAL INDUSTRIAL
 - Q - QUARRY

This Zoning Map was adopted by the Washington Township Board of Supervisors on December 12, 2017, by Ordinance No. 2017- 4.

Chairman _____

Vice Chairman _____

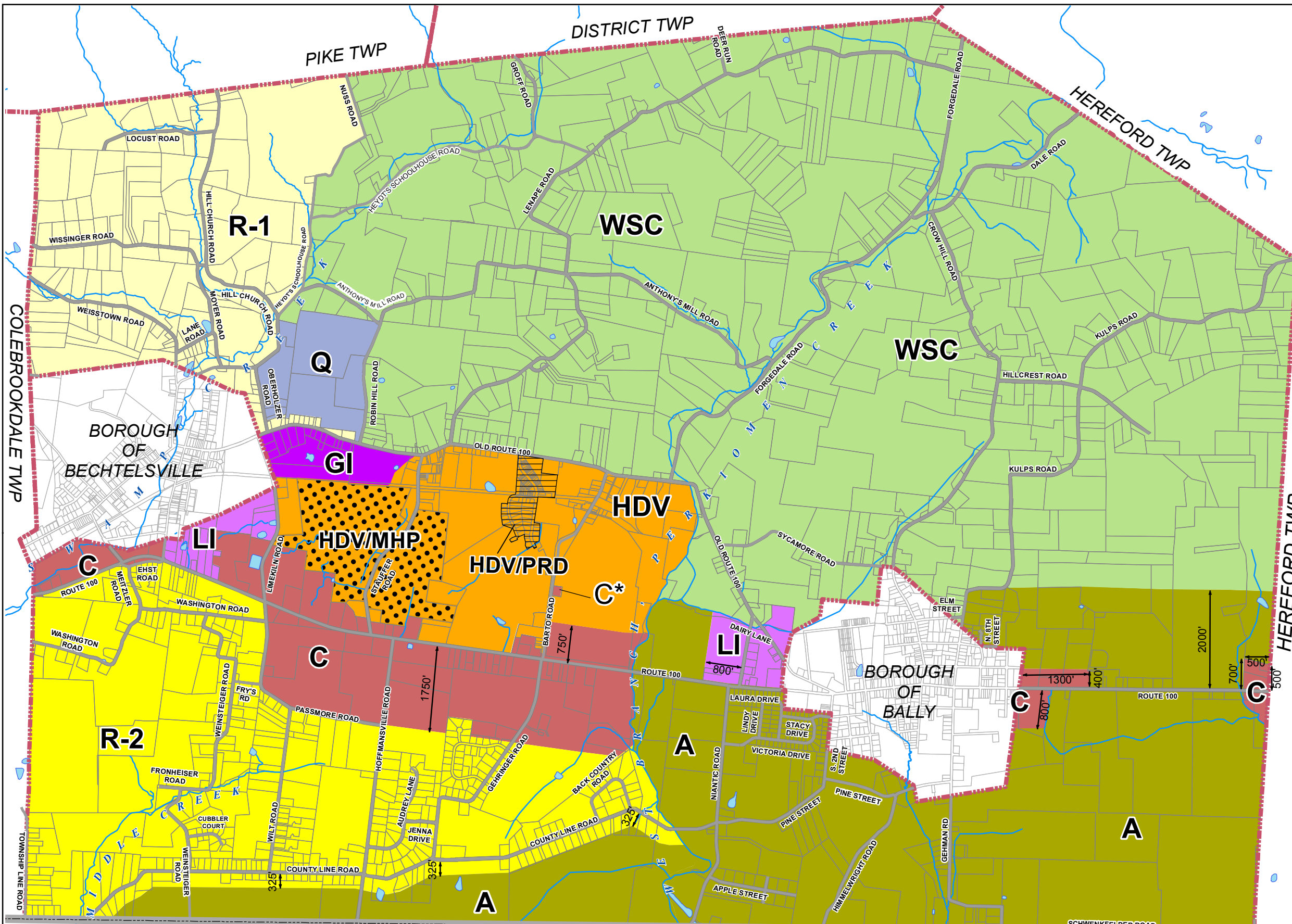
Member _____

Secretary /Manager _____

Attest _____

ORDINANCE / MAP REVISIONS

- 9/23/2000 – Mobile Home Park Overlay (MHP) added to the HDV district.
- 1/10/2002 – Agricultural District amended.
- 9/24/2003 – WSC District amended.
- 9/23/2004 – Planned Residential Development (PRD) Overlay added to HDV district in accordance with West Tract PRD Tentative Plan Approval (dated 7/22/2004).
- 12/16/2004 – LI District amended.
- 05/24/2012 – Modifications to the LI, C, PRD, HDV, and WSC districts per Ordinance No. 2012- 2.
- 12/12/2017 - Modifications to the HDV/PRD Overlay per Ordinance NO. 2017 - 4



DOUGLASS TWP

MONTGOMERY COUNTY

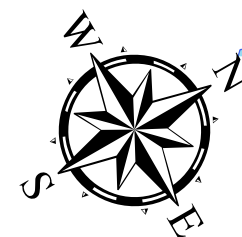
UPPER HANOVER TWP

DATA SOURCES:
 MUNICIPAL AND COUNTY BOUNDARIES BY BERKS COUNTY MAPPING DEPARTMENT 2012.
 PARCELS BY BERKS COUNTY MAPPING DEPARTMENT 2013.
 ROAD CENTERLINES, AND MUNICIPAL BOUNDARIES BY BERKS COUNTY 2008.
 STREAMS CENTERLINE BY LTL CONSULTANTS, MODIFIED FROM PADEP and USGS 2010 USING PA MAP AERIAL PHOTOS.
 ZONING DISTRICT BOUNDARIES BY LTL CONSULTANTS, 2012 BASED ON ORDINANCE REVISIONS, 2017 BASED ON ORDINANCE REVISIONS, AND STREAM/ROAD CENTERLINE DATA.

MAP USE:
 THIS MAP IS INTENDED FOR REFERENCE USE ONLY. NOT INTENDED FOR USES REQUIRING ENGINEERING OR SURVEY ACCURACY.

SPECIAL NOTES:
 * NOTE ON PIN - 539904608996: THIS PROPERTY REMAINS ZONED COMMERCIAL.

NOTE ON DIMENSIONS - WHERE DIMENSIONS ARE SHOWN FOR DISTRICT BOUNDARIES, SUCH DIMENSIONS ARE MEASURED FROM EITHER THE CENTERLINE OF ROADS OR THE TOWNSHIP BOUNDARY LINE.



2,000 1,000 0 2,000

MAP SCALE
 1:24,000
 1" = 2,000'



E:\Washington\0239-1018 Zoning Ordinance Amendments\Zoning Map 11X17 100318.mxd